

# Connecting to Rovernet 2.0 with Mac OS X 10.4 (Tiger)

Rovernet 2.0 is a Michigan Tech WPA Enterprise Solution that allows for greater flexibility and security when accessing the campus wireless network. The “**MichiganTech**” (SSID) is only accessible via WPA Enterprise (PEAP) authentication. Once authenticated, the traffic is encrypted. To obtain access to this encrypted network, wireless clients will be required to configure their devices for WPA/WPA2 authentication.

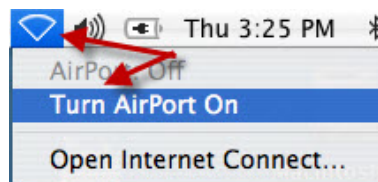
Before you begin this procedure, you need to determine whether your computer supports WPA and/or WPA2.

## Minimum System Requirements

- Be within the “**MichiganTech**” SSID wireless coverage areas.
- Be a current Michigan Tech student, faculty, or staff member.
- Have a valid ISO User Name and Password.
- Have installed Mac OS X 10.4 or later.
- Have installed all critical updates and patches to your operating system.
- Have installed and enabled an AirPort card that supports WPA; or an AirPort Extreme card that supports WPA2.  
(Note: older, non-Extreme Airport cards do not support WPA2)
- Have installed the AirPort software version 3.3 or later for the AirPort Card (available via Software Update); or the AirPort software version 3.2 or later for the AirPort Extreme Card (available via Software Update).

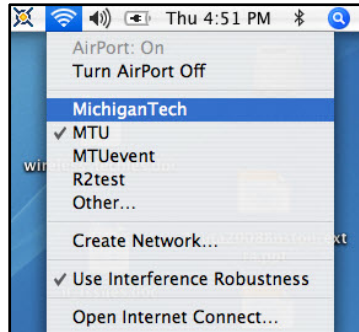
## Adding and Configuring the “MichiganTech” SSID with Mac OS X 10.4 (Tiger)

1. Click the **AirPort** icon located at the top right corner of the menu bar.



2. Make sure that **AirPort** is turned on. If it is not on, select **Turn AirPort On**.

3. Join the “MichiganTech” wireless network using one of the following methods:
  - a. Click the **AirPort** Icon again and then click “MichiganTech”.



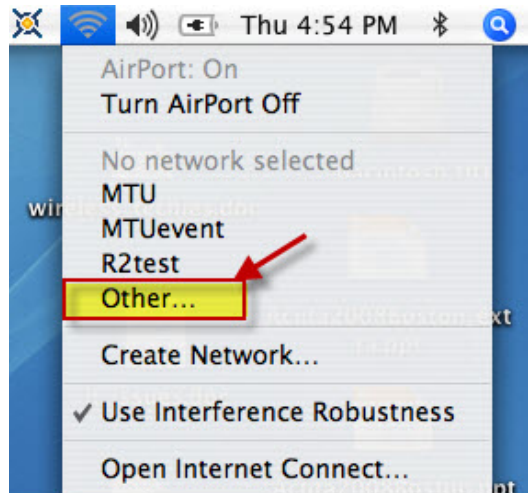
An **802.1X Authentication** dialog box will appear on the screen.

- i. Enter your **ISO User name** and **Password** in the **802.1X Authentication** dialog box.



- ii. Click **OK**.

- b. If “**MichiganTech**” does not appear in the list of available networks, click **Other**.

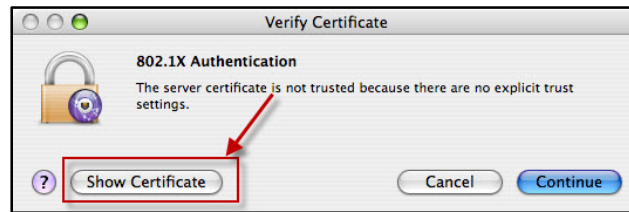


The join **Closed Network** dialog box is displayed.

Specify the network information as follows:

- i. Select “**MichiganTech**” from the drop down list of **Network Names**; or enter “**MichiganTech**” if it is not in the list of available choices.
- ii. Select **WPA2 Enterprise** (preferred) or **WPA Enterprise** for the **Wireless Security**.
- iii. Enter your **ISO User name** and **password**.
- iv. Select **Automatic** for the **802.1X Configuration**.
- v. Click **OK**.

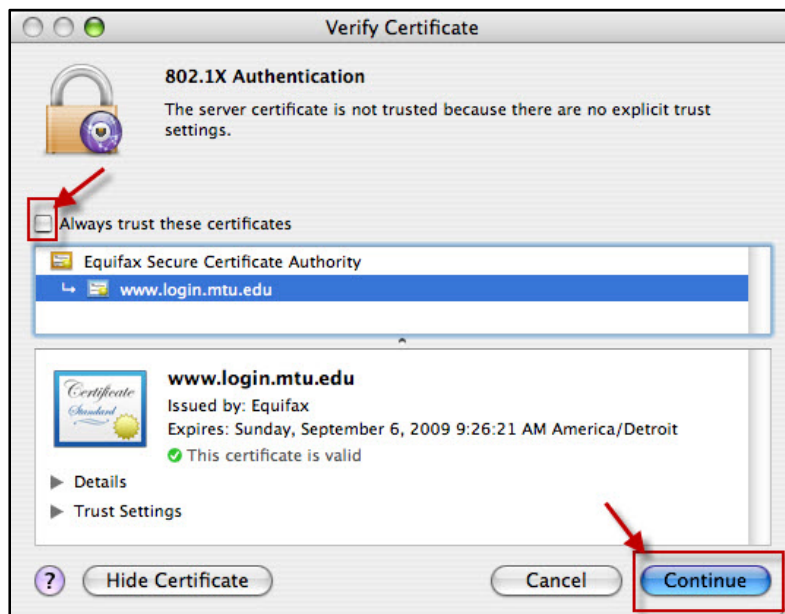
When you connect for the first time, the Server Certificate dialog box is displayed.



4. Click **Show Certificate**

The **Verify Certificate** dialog box is displayed.

5. Verify the information contained in the **Verify Certificate** dialog box.



6. If the certificate is correct,
  - a. Select the Equipax Secure Certificate Authority **www.login.mtu.edu** certificate and check the box to “**Always trust these certificates.**”
  - b. Click **Continue**.

You should now be connected to the “**MichiganTech**” wireless network.

If you are unable to connect, please check to make sure you entered your ISO User name and Password correctly in step 3 of these instructions. Refer to the Initial Sign-On (ISO) Site at <http://www.login.mtu.edu>, if you have forgotten your MTU ISO password.